

1/3 South Street, Bo'ness, West Lothian,

EH51 0EA

T: 01506 826232

E: property@sneddons.com

W: www.sneddons.com



sneddons
solicitors & estate agents **S.S.C.**



20a Craigfoot Terrace, Bo'ness

Offers Over £69,995

- Spacious Maisonette Flat
- 1 Double Bedroom
- Modern Kitchen Diner
- Good Sized Lounge
- High Ceilings
- Fresh Decor
- Newly Laid Carpets
- Great First Time Buy



20a Craigfoot Terrace, Bo'ness

Description

Presented to the market in walk in condition is this spacious Maisonette situated in a popular area of Bo'ness. This property has recently been refurbished to a very good standard and will suit the first time buyer and the buy to let investor. The high ceilings of this property are a lovely feature and the fresh neutral decor makes it light and airy. The property has gas central heating, double glazing, recently laid carpets and good storage.

Accommodation

The accommodation is arranged over two levels. The lower level has a welcoming hallway, a generously proportioned lounge, a modern fitted dining kitchen that has ample storage cupboards, complementary work tops, gas hob and electric oven.

The upper level has a double bedroom to the rear with a Dormer style window. The bathroom has a shower above the bath.

Outside

Externally to the rear is a communal garden primarily laid to lawn. Parking is on street.

Local Area

The expanding town of Bo'ness has amenities to meet every day needs, including schools at both Primary and Secondary levels located within walking distance. Attractions in the town include the Bo'ness & Kinneil Railway, Kinneil House, Hippodrome Art Deco cinema and Antonine wall. Bo'ness is also ideally placed for the commuter with major access roads allowing ease of movement outwith the area. It is also worth noting the proximity to Linlithgow, which provides additional shopping and recreational facilities and a railway station with regular services to Edinburgh, Glasgow and beyond.

Lounge

5.13m x 4.30m (16'10" x 14'1")

Kitchen Diner

4.77m x 3.70 (15'8" x 12'2")

3.70m is the widest measurement in the Kitchen

Bedroom

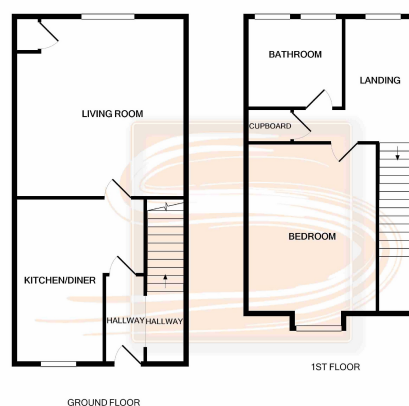
4.00m x 3.57m (13'1" x 11'9")

Bathroom

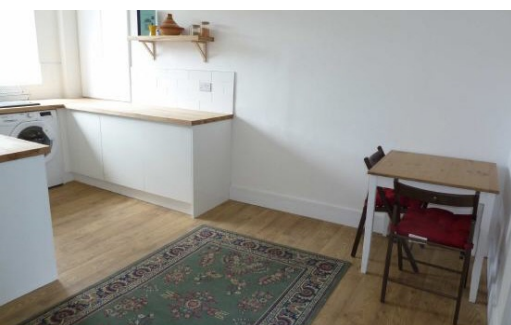
2.18m x 2.32m (7'2" x 7'7")

Contact Us

To arrange a viewing or for further details please call 01506 826232 or email property@sneddons.com.



Whilst every attempt has been made to ensure the accuracy of the floor plan contained here, measurements of doors, windows, rooms and any other items are approximate and no responsibility is taken for any error, omission, or misstatement. This plan is for illustrative purposes only and should be used as such by any prospective purchaser. The services, systems and appliances shown have not been tested and no guarantee as to their operability or efficiency can be given.
Made with Metreco ©2023



Sneddons for themselves and their clients the owners, give notice that while these particulars are believed to be correct their accuracy is not warranted. All measurements are approximate only. Interested parties are advised to satisfy themselves as to all details and sizes of the property prior to submitting any offer. These particulars are for information only and are not intended to, nor shall they, form part of any contract relative to the property.

If you have a property to sell then why not take advantage of our FREE VALUATION service - contact us for a no obligation appraisal of your property.



sneddons
solicitors & estate agents **S.S.C.**