



sneddons
solicitors & estate agents



77 Woodend Walk

Armadale, Bathgate, EH48 3QN

Offers over £134,000



Spacious family home with 3 double bedrooms. This property is presented to the market in walk in condition and will suit a variety of buyers



Description

77 Woodend Walk, Armadale is a spacious mid terraced family home presented to the market in walk in condition. This property will suit a variety of buyers including the first and second time buyers and further benefits from gas central heating, good storage, fresh decor and double glazing. Early viewing is recommended.

Accommodation

The generously proportioned accommodation is arranged over two levels and includes a welcoming reception hallway. The lounge is naturally light and airy and has a featured TV wall with an electric fire below.

The modern fitted kitchen has ample storage units, complementary work tops, gas hob and electric oven. The white goods include the washing machine, dishwasher and fridge freezer. The dining room is just off the kitchen and has a featured wall and a built-in storage cupboard.

The upper level consists of three double bedrooms with built in storage. The bathroom is finished to a good standard and has a P shaped bath with shower above.

Outside

There are enclosed low maintenance gardens to the front and rear. Parking is on street.

Armadale

Armadale has a good variety of shops within the town with more extensive shopping facilities available in nearby Bathgate and Livingston. A regular bus service runs to and from Edinburgh city centre and the surrounding areas with the property ideally placed for the M8 motorway, which provides for easy access to Glasgow. Armadale also has the added benefit of the newly opened rail link connecting Edinburgh and Glasgow. There are Primary and Secondary schools in Armadale with recreational needs more than adequately catered for by way of golf courses and local swimming pool with the surrounding countryside allowing for leisurely walks.

Lounge 14'2" x 11'7" (4.33m x 3.54m)

Kitchen 9'6" x 9'9" (2.90m x 2.98m)

Dining Room 12'0" x 7'11" (3.66m x 2.42m)

Bedroom 1 13'4" x 11'7" (4.07m x 3.55m)

Bedroom 2 9'8" x 11'3" (2.95m x 3.45m)

Bedroom 3 10'1" x 8'2" (3.09m x 2.50m)

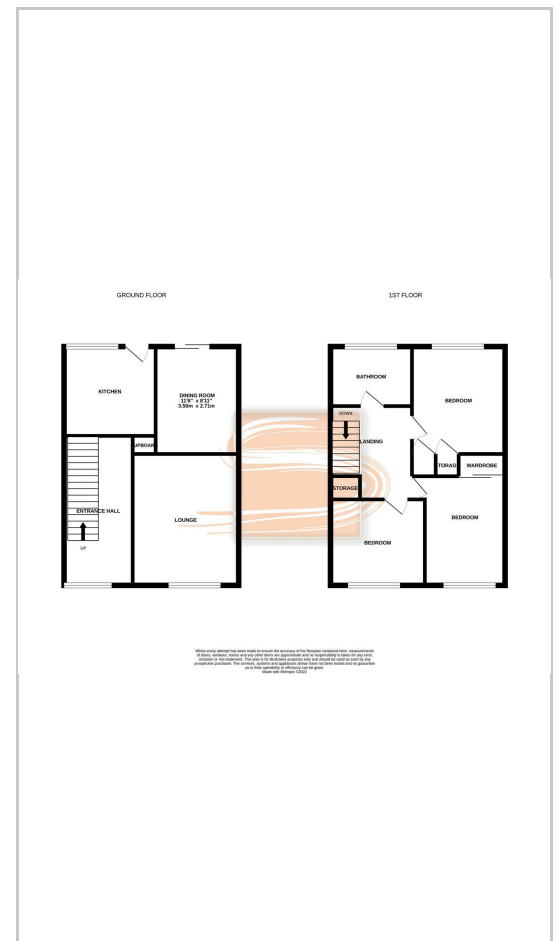
Bathroom 6'0" x 6'3" (1.83m x 1.92m)

Contact us

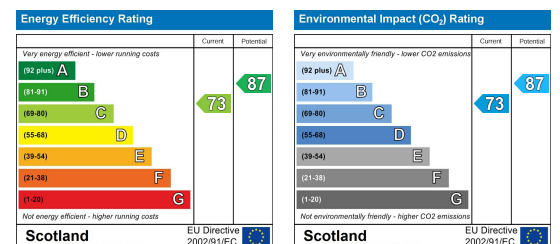
Area Map



Floor Plans



Energy Efficiency Graph



These particulars, whilst believed to be accurate are set out as a general outline only for guidance and do not constitute any part of an offer or contract. Intending purchasers should not rely on them as statements of representation of fact, but must satisfy themselves by inspection or otherwise as to their accuracy. No person in this firm's employment has the authority to make or give any representation or warranty in respect of the property.

47/49 West Main Street, Armadale, West Lothian, EH48 3PZ

Tel: 01501 733200 Email: property@sneddons.com www.sneddons.com